

# Smart Scent SD Series

## D version

Optional screen control/Bluetooth/WIFI

## PRODUCT MANUAL



Before using product, please read this instructions carefully and safe-keeping.

### Notes:

- Do not disassemble the device by yourself;
- It is strictly forbidden to tilt or invert the equipment that is working and contains essential oils;
- Do not use other non-standard power supplies. The device only supports DC 12V adapters, otherwise the device will be damaged.
- Do not use this equipment in extreme environments such as high temperature, excessive humidity, and excessive humidity;
- Do not install/place the device in an area where children can easily reach;
- Do not place the device in an area with poor signal to prevent the device from being connected due to problems.
- When connecting to WIFI, please pay attention to adjust the connection mode as needed. Older routers may need AP mode (compatible mode) to connect;
- The Bluetooth connection is recommended to be within five meters to ensure stable data transmission;
- Do not add essential oil from the fogging place, otherwise the machine will not be atomized normally, and the serious situation will cause damage to the machine;
- When replacing essential oils, please pay attention to whether the gasket at the bottle mouth installation is off or damaged. If it is off or damaged, it should be replaced in time;
- If the machine is not used for a long time, remove the essential oil and unplug the power supply;
- Since the device itself has a certain weight, please do not install the device in an unstable place to prevent the device from falling.
- It is recommended to clean or replace the atomization core every 3 months

## COMMON TROUBLESHOOTING

Malfunction	Exclude
No atomization	Whether the power supply is connected, air pump is damaged, and the equipment is in working.
Small amount of atomization	Whether the atomization core is blocked or not, and the cleaning equipment confirms; whether the air pump is aging.
Fragrance spray spouting liquid	Whether the equipment is tilted, and essential oil in the bottle overflows the atomizing core.
Essential oil leak	Whether the essential oil bottle is loose, gasket at the mouth of the bottle is damaged, and atomizing head is damaged.
The device emits abnormal noise	Whether the air pump is damaged, check whether there is air outlet or abnormal vibration.
Can't connect to device	Whether the device is connected (red light is on) WIFI connected equipment: Whether the router is compatible with the general mode, please use the AP mode (compatible mode) if the router is not compatible; whether the distance between the router and the device is too far; Bluetooth connected device: Whether the mobile phone is too far away from the device; 2G network connected equipment: Whether the signal of the equipment installation environment is shielded.

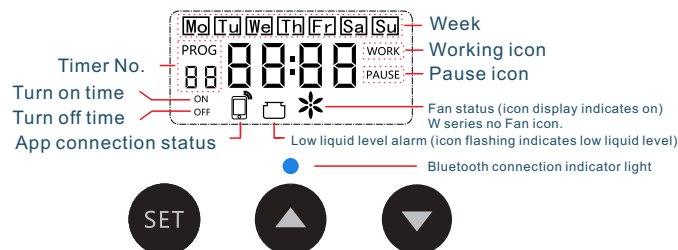
## PRODUCT PARAMETERS

SD005B Size	200mm*90mm*270mm	Essential oil capacity	150ml
Rated voltage	DC12V	Weight	2.65kg
Power	6W	Coverage	100-300m³
SD008 Size	230mm*90mm*300mm	Essential oil capacity	500ml
Rated voltage	DC12V	Weight	3.57kg
Power	6W	Coverage	300-1000m³
SD020 Size	260mm*94mm*350mm	Essential oil capacity	880/1000ml
Rated voltage	DC12V	Weight	4.69kg
Power	10W	Coverage	1000-2000m³

## CONCENTRATION AND CONSUMPTION

	Grade	1	2	3	4	5	6	7	8	9	10
SD005	Working time(s)	10	20	30	40	50	60	70	80	90	100
	Interval(S)	100	90	80	70	60	50	40	30	20	10
	Atomization amount(g/h)	0.05	0.1	0.15	0.2	0.25	0.3	0.35	0.4	0.45	0.5
SD008	Grade	1	2	3	4	5	6	7	8	9	10
	Working time(s)	10	20	30	40	50	60	70	80	90	100
	Interval(S)	100	90	80	70	60	50	40	30	20	10
	Atomization amount(g/h)	0.30	0.6	0.9	1.2	1.5	1.8	2.1	2.4	2.7	3
SD020	Grade	1	2	3	4	5	6	7	8	9	10
	Working time(s)	10	20	30	40	50	60	70	80	90	100
	Interval(S)	100	90	80	70	60	50	40	30	20	10
	Atomization amount(g/h)	0.5	1	1.5	2.0	2.5	3.0	3.5	4.0	4.5	5.0

## Panel Description



## PANEL AND OPERATION INSTRUCTIONS



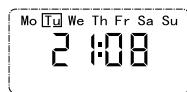
A-Start Page

- Turn on and display the current device clock/week, Fan on status, device atomization/pause, Oil level status
- Long press ▼ to turn on/off the fan
- Tap ▲ to quickly enter and adjust the current Nebulization concentration setting page



B-Standby page

- [Page A] Automatically enter without operation for 10 seconds
- Backlight off
- Display the current device operation number during the time period, Fog/pause countdown seconds
- Only display OFF outside the time period
- Tap SET to return to page A



C-Clock Settings Page

- [Page A] Long press SET to enter
- Tap SET to select the adjustment position
- Tap ▼ / ▲ Adjust Values
- Long press SET to save and return to page A



D-Timer No. selection page

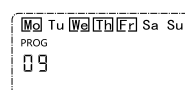
- [Page A] Tap SET to enter
- Tap ▼ / ▲ adjust the serial number, Not displaying (ON/OFF) indicates that the sequence number is timed No data set for device
- Long press ▼ to delete the timer data
- Tap SET to adjust the timer data

[C/D/E/F/G Page] You can long press SET to save data and return to [A Page]



E-Time period setting page

- [D Page] Tap SET to enter
- Tap SET to select the adjustment position
- Tap ▼ / ▲ Adjust Values



F-Weekday selection page

- [E Page] Tap SET to enter
- Tap ▼ to select the adjustment position
- Tap ▲ to adjust values (framed as weekdays)



G-Concentration ratio setting page

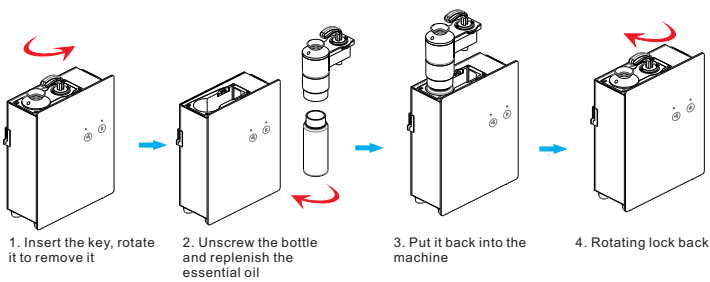
- [F Page] Tap SET to enter
- Tap ▼ / ▲ Adjust Values
- Tap SET to switch between "WORK" and "PAUSE" Or return to page D



H-APP Connected  
-Locked screen page

- Locked or connected by mobile appBluetooth/WIFI automatic entry
- Flashing indicates that the screen has been locked by the APP
- OFF Display indicates that the device is inWithin the non working timer

REPLACE ESSENTIAL OIL



[Atomization mode] Two fluid atomization technology  
[Using power] DC12V 1A/2A  
[Accessories] Power adapter, Manual, Warranty card, Wall mount accessory, Key, PU pipe, Cement nail, Certificate of conformity, Quick connector

\*Note: The usage methods for SD005, SD008, and SD020 in the above figures are the same.

APP DOWNLOAD QR CODE AND OPERATION

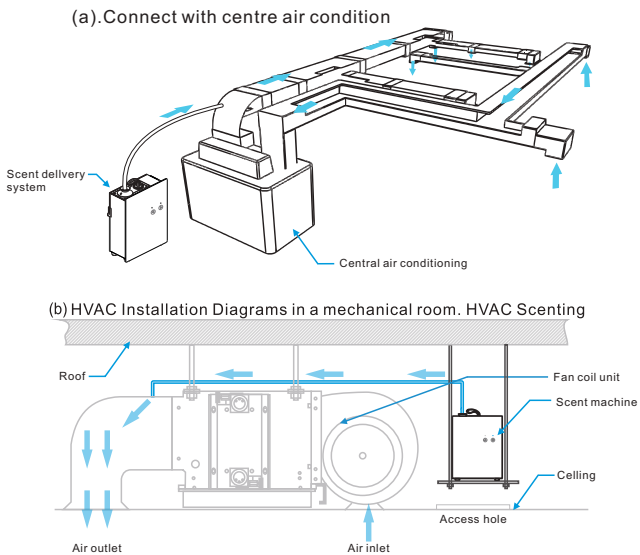


APP download QR code



APP operation guide

PRODUCT INSTALLATION



WARRANTY CARD

- Any belongs to under normal usage circumstance cause because of the product's own quality,customers can bring the card and the machine get the free repair from our company.
- In normal use conditions,for the causes of manufacturer's fault, we will offer warranty. There is one year warranty since purchase date.
- The following are no warranty services:
  - The damage caused by natural disaster and accident  
(For example:Conflagration, Earthquake and so on);
  - Don't according to the operational requirement to use;
  - The damage caused by transport improper;
  - Can't provide the warranty card or certificate of content be altered.
- If maintenance,the guarantee of quality assurance and obligations, the time limit according to the warranty card.

WARRANTY CARD

● Maintenance records

Maintenance Date	Maintenance Organisation	Maintenance item	Serviceman

Since the date of sale, the product will be free of charge for one year, beyond the scope of warranty, paid maintenance, and lifetime maintenance.

CERTIFICATION

Product Name: Aroma Diffuser  
Model: SD005/SD008/SD020  
Grade: First Class  
Place of Origin: Guangzhou, China  
Inspectors: \_\_\_\_\_  
Production Date: \_\_\_\_\_