

SMART AROMA DIFFUSER

Z300 / Z1000

PRODUCT MANUAL



Before using product, please read this instructions carefully and safe-keeping.

Notes:

- Do not disassemble the device by yourself;
- It is strictly forbidden to tilt or invert the equipment that is working and contains essential oils;
- Do not use other non-standard power supplies. The device only supports DC 12V adapters, otherwise the device will be damaged.
- Do not use this equipment in extreme environments such as high temperature, excessive humidity, and excessive humidity;
- Do not install/place the device in an area where children can easily reach;
- Do not place the device in an area with poor signal to prevent the device from being connected due to problems.
- When connecting to WIFI, please pay attention to adjust the connection mode as needed. Older routers may need AP mode (compatible mode) to connect;
- The Bluetooth connection is recommended to be within five meters to ensure stable data transmission;
- Do not add essential oil from the fogging place, otherwise the machine will not be atomized normally, and the serious situation will cause damage to the machine;
- When replacing essential oils, please pay attention to whether the gasket at the bottle mouth installation is off or damaged. If it is off or damaged, it should be replaced in time;
- If the machine is not used for a long time, remove the essential oil and unplug the power supply;
- Since the device itself has a certain weight, please do not install the device in an unstable place to prevent the device from falling.

COMMON TROUBLESHOOTING

Malfunction	Exclude
No atomization	Whether the power supply is connected, air pump is damaged, and the equipment is in working.
Small amount of atomization	Whether the atomization core is blocked or not, and the cleaning equipment confirms; whether the air pump is aging.
Fragrance spray spouting liquid	Whether the equipment is tilted, and essential oil in the bottle overflows the atomizing core.
Essential oil leak	Whether the essential oil bottle is loose, gasket at the mouth of the bottle is damaged, and atomizing head is damaged.
The device emits abnormal noise	Whether the air pump is damaged, check whether there is air outlet or abnormal vibration.
Can't connect to device	Whether the device is connected (red light is on) WIFI connected equipment: Whether the router is compatible with the general mode, please use the AP mode (compatible mode) if the router is not compatible; whether the distance between the router and the device is too far; Bluetooth connected device: Whether the mobile phone is too far away from the device; 2G network connected equipment: Whether the signal of the equipment installation environment is shielded.

PRODUCT PARAMETERS

Model	Size	Voltage	Power	Weight	Essential oil capacity	Coverage
Z300	185mm*90mm*210mm	DC12V1A	3.5W	1700g	150ml	300m³
Z1000	220mm*105mm*265mm	DC12V1A	6W	2200g	500ml	1000m³

CONCENTRATION AND CONSUMPTION

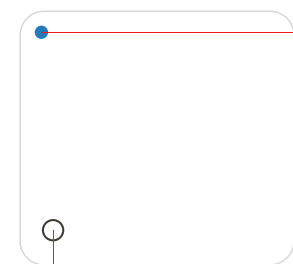
Consumption(g/h)

Z300										
Grade	1	2	3	4	5	6	7	8	9	10
Working time(S)	10	20	30	40	50	60	70	80	90	100
Interval (S)	100	90	80	70	60	50	40	30	20	10
Atomization amount(g/h)	0.06	0.12	0.18	0.24	0.3	0.36	0.48	0.5	0.54	0.6

Z1000										
Grade	1	2	3	4	5	6	7	8	9	10
Working time(S)	10	20	30	40	50	60	70	80	90	100
Interval (S)	100	90	80	70	60	50	40	30	20	10
Atomization amount(g/h)	0.2	0.5	0.7	0.95	1.2	1.45	1.7	1.9	2.15	2.4

Note: The above data is based on laboratory standard environmental test values, for reference only, the actual value is related to the use environment and fragrance.

PANEL AND OPERATION INSTRUCTIONS



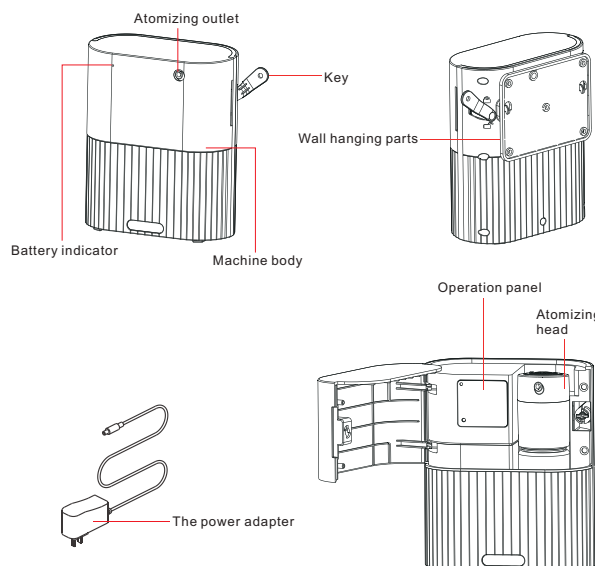
Setting Button

Indicator

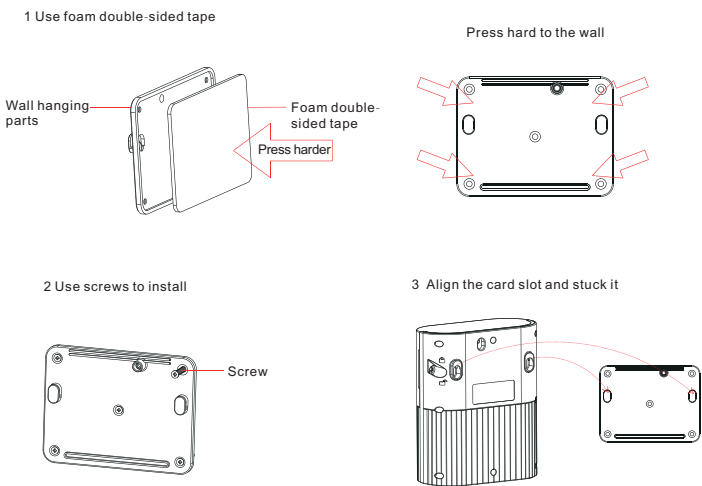
Red: Can be connected via Bluetooth;
Blue: Bluetooth is connected;
Fast flashing red light: one-key network Connection (WIFI)
Red light flashes slowly: AP network Connection (WIFI)
Purple light flashing: Connecting to the cloud (WIFI/2G/4G);
Purple light is always on: Connected to the cloud;

- The indicator light will automatically go out after 30 seconds of inactivity. If the fuel level is low, it will flash a red light once in 10 seconds. Double-click the setting button to activate the indicator light.
- When the light is always on, press and hold the setting button for 3 seconds until the red light flashes, release the button, and follow the APP operation instructions to complete the network connection;
- When the light is always on, long press the setting button for 3 seconds, the red light flashes, do not release it and then long press for 3 seconds until the blue light flashes and release the button to complete the factory reset.

PRODUCT OVERVIEW

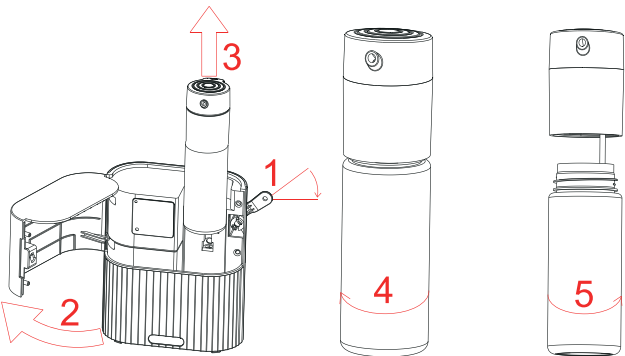


PRODUCT INSTALLATION



REPLACE ESSENTIAL OIL

1. Take out the key
2. Open the shell
3. Take out the atomizing components
4. Rotate the essential oil bottle to the left
5. Take out the essential oil bottle and fill the essential oil before reinstalling it



APP DOWNLOAD QR CODE AND OPERATION



APP download QR code



APP operation guide

WARRANTY CARD

1. Any belongs to under normal usage circumstance cause because of the product's own quality,customers can bring the card and the machine get the free repair from our company.
2. In normal use conditions,for the causes of manufacturer's fault, we will offer warranty. There is one year warranty since purchase date.
3. The following are no warranty services:
 - The damage caused by natural disaster and accident
(For example:Conflagration, Earthquake and so on);
 - Don't according to the operational requirement to use;
 - The damage caused by transport improper;
 - Can't provide the warranty card or certificate of content be altered.
4. If maintenance,the guarantee of quality assurance and obligations, the time limit according to the warranty card.

WARRANTY CARD

● Maintenance records

Maintenance Date	Maintenance Organisation	Maintenance item	Serviceman

Since the date of sale, the product will be free of charge for one year, beyond the scope of warranty, paid maintenance, and lifetime maintenance.

CERTIFICATION

Product Name: Aroma Diffuser
Model: Z300/Z1000
Grade: First Class
Place of Origin: _____
Inspectors: _____
Production Date: _____