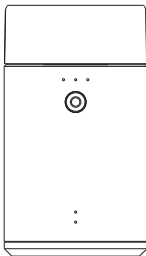


# SMART AROMA DIFFUSER

TC80



## PRODUCT MANUAL

ACCESSORIES:MANUAL/WARRANTY CARD

The appearance of the product is slightly different due to different versions, please refer to the actual product, the picture is for illustration only

### Please read this instructions carefully and safe-keeping

#### NOTE:

- Do not disassemble the device by yourself;
- Do not tilt or invert equipment that is working and is filled with essential oils;
- Do not use other non-standard power supplies, the device only supports DC 5V adapter, otherwise, it will damage the equipment;
- Do not use the device in extreme environments such as high temperature, excessive moisture or excessive humidity;
- Do not install/place the device in an area that is easily accessible to children;
- Do not place the device in an area with poor signal to prevent the device from being connected to problems and unable to control the device ;
- When Bluetooth connect the device, it is suggested that within 5 meters, to make sure the data transmission stable;
- Do not add essential oil from the mist outlet, otherwise the machine will not be able to atomize normally, and the machine will be damaged if the situation is serious.
- When replacing the essential oil, please pay attention to whether the gasket at the bottle mouth installation is detached or damaged.If it falls off or is damaged, it should be replaced in time;
- If you do not use the machine for a long time, you should take out the essential oil and unplug the power supply;
- Since the device itself has a certain weight, do not install the device in an unreliable place to prevent it from falling.

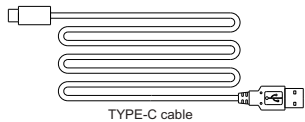
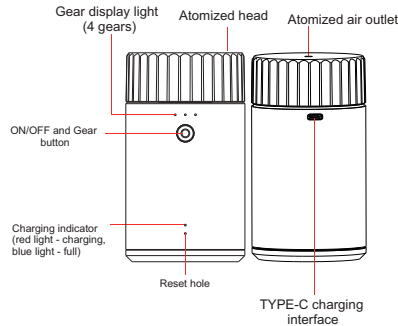
### Common Failure

The fault	How to checking fault
No Atomizing	Check the power already connect or not; Check the pump was damaged or not; Check the device in the working setting time or not;
Spray a little mist	Check the atomized core block or not, using alcohol to clean for confirm; Check the pump was aging or not, using your hand feeling the air outlet pressure weak or not
Spray oils liquid not mist	Check if the device was tile, check if spray head was damaged.
Essential oil leak	Check if the refilled oil bottle was loosen
Abnormal sound	Check if the air pump was loosen
Connection failed	Whether the device is connected (3 gear lights are on at the same time). Check whether the distance between mobile and device is too far.

### Basic Parameters

Model	TC80
Size	φ 68mm*121.5mm
Weight	380g
Voltage and power	DC5V-1W
Coverage	2-80 cubic meter
Bottle capacity	20ml

### Product introduction



### Gear introduction

Mode	Car(Blue light)			Desktop(White light)			Customized mode
Gear	1	2	3	1	2	3	4
Light							
Working time	2s			4s			Bluetooth connected to the mobile phone, in the APP can independently choose the working time, interval, switch on and off time.
Interval	5min	3min	1min	5min	3min	1min	

- Set the gear key: gear switching: long press to switch the machine (gear/mode is the same as last turned off);
- Mode switching: In the off state, long press the set gear button to continue after turning it on. Let go for 4 seconds, the light changes color and the switch is successful;
- Custom mode: After scanning the code to download and install the APP, switch the device to 3 lights on at the same time, After the light is on, you can connect to the operation;
- Automatic start and stop: In car mode, when the machine is turned on, it will automatically sense the vibration of the car. If the car does not vibrate within 30 seconds, the device will automatically enter the standby state; In the standby state, the device will automatically enter the running state when the vibration of the car is sensed.

### SMART SCENT PRO APP CONTROL



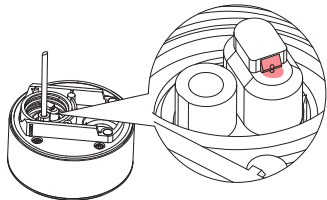
APP download QR code

APP control introduction



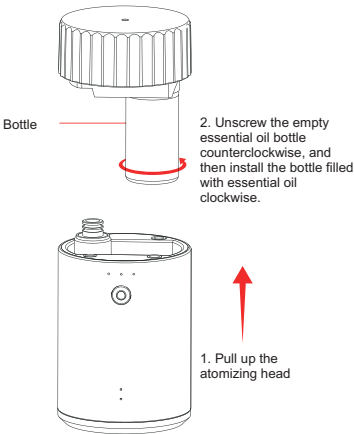
APP control introduction QR code

How to clean atomized core



Use the machine every six months or when the atomization effect is obviously deteriorated, please use alcohol cotton to wipe the nozzle of the atomization core to ensure the atomization effect.  
(The atomizing core is next to the essential oil tube, and the cleaning position is shown in the red position in the picture above)

How to replace essential oil



Warranty card

1. Any belongs to under normal usage circumstance cause because of the product's own quality,customers can bring the card and the machine get the free repair from our company.
2. In normal use conditions,for the causes of manufacturer's fault, we will offer warranty. There is one year warranty since purchase date.
3. The following are no warranty services:  
The damage caused by natural disaster and accident (For example:Conflagration, Earthquake and so on);  
●Don't according to the operational requirement to use;  
●The damage caused by transport improper;  
●Can't provide the warranty card or certificate of content be altered.
4. If maintenance,the guarantee of quality assurance and obligations, the time limit according to the warranty card.

Warranty card

● Maintenance records

Maintenance Date	Maintenance Organisation	Maintenance item	Serviceman

Since the date of sale, the product will be free of charge for one year, beyond the scope of warranty, paid maintenance, and lifetime maintenance.

CERTIFICATION

Product Name: Aroma Diffuser  
Model: TC80  
Grade: First Class  
Place of Origin: \_\_\_\_\_  
Inspectors: \_\_\_\_\_  
Production Date: \_\_\_\_\_