

Smart Scent E500

D version

PRODUCT MANUAL



Optional screen control/Bluetooth/WIFI

ACCESSORIES: Product manual, Warranty card, Certification.

Before using product, please read this instructions carefully and safe-keeping.

Notes:

- Do not disassemble the device by yourself;
- It is strictly forbidden to tilt or invert the equipment that is working and contains essential oils;
- Do not use other non-standard power supplies. The device only supports DC 12V adapters, otherwise the device will be damaged.
- Do not use this equipment in extreme environments such as high temperature, excessive humidity, and excessive humidity;
- Do not install/place the device in an area where children can easily reach;
- Do not place the device in an area with poor signal to prevent the device from being connected due to problems.
- When connecting to WIFI, please pay attention to adjust the connection mode as needed. Older routers may need AP mode (compatible mode) to connect;
- The Bluetooth connection is recommended to be within five meters to ensure stable data transmission;
- Do not add essential oil from the fogging place, otherwise the machine will not be atomized normally, and the serious situation will cause damage to the machine;
- When replacing essential oils, please pay attention to whether the gasket at the bottle mouth installation is off or damaged. If it is off or damaged, it should be replaced in time;
- If the machine is not used for a long time, remove the essential oil and unplug the power supply;
- Since the device itself has a certain weight, please do not install the device in an unstable place to prevent the device from falling.
- It is recommended to clean or replace the atomization core every 3 months

COMMON TROUBLESHOOTING

Malfunction	Exclude
No atomization	Whether the power supply is connected, air pump is damaged, and the equipment is in working.
Small amount of atomization	Whether the atomization core is blocked or not, and the cleaning equipment confirms; whether the air pump is aging.
Fragrance spray spouting liquid	Whether the equipment is tilted, and essential oil in the bottle overflows the atomizing core.
Essential oil leak	Whether the essential oil bottle is loose, gasket at the mouth of the bottle is damaged, and atomizing head is damaged.
The device emits abnormal noise	Whether the air pump is damaged, check whether there is air outlet or abnormal vibration.
Can't connect to device	Is the positioning and Bluetooth permissions enabled for mobile phones and app WIFI connection device: Do you prioritize using Bluetooth "de network" to connect to the router or the AP in the WIFI option is compatible with the distribution network; Bluetooth connected devices: Is the phone too far away from the device; 4G network connected devices: whether the installation environment signal of the device is blocked.

PRODUCT PARAMETERS

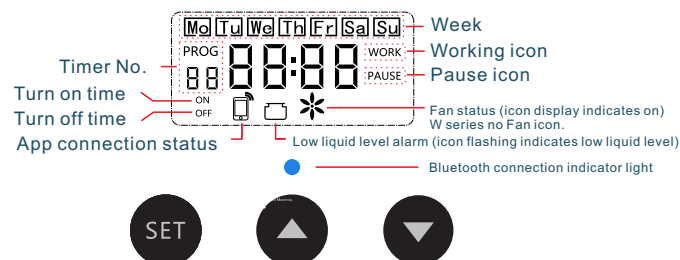
E500 Size	148mm*78.6mm*176.5mm	Characteristic	Screen control/APP control/ Low noise/Large capacity/ takeover capability
Rated Voltage	DC12V	Weight	1.4kg
Power	6W	Coverage	500m³
Atomization	0.15-1.5g/h	Essential oil capacity	300ml

CONCENTRATION AND CONSUMPTION

E500	Gear	1	2	3	4	5	6	7	8	9	10
	Working time(s)	10	20	30	40	50	60	70	80	90	100
	Interval(s)	100	90	80	70	60	50	40	30	20	10
	Atomization amount(g/h)	0.15	0.3	0.45	0.6	0.75	0.9	1.05	1.2	1.35	1.5

The above is specific essential oil data for laboratory environment testing, for reference only.

Panel Description



PANEL AND OPERATION INSTRUCTIONS



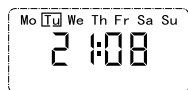
A-Start Page

- Turn on and display the current device clock/week, Fan on status, device atomization/pause, Oil level status
- Long press **▼** to turn on/off the fan
- Tap **▲** to quickly enter and adjust the current Nebulization concentration setting page



B-Standby page

- [Page A] Automatically enter without operation for 10 seconds
- Backlight off
- Display the current device operation number during the time period, Fog/pause countdown seconds
- Only display OFF outside the time period
- Tap **SET** to return to page A



C-Clock Settings Page

- [Page A] Long press **SET** to enter
- Tap **SET** to select the adjustment position
- Tap **▼** / **▲** Adjust Values
- Long press **SET** to save and return to page A



D-Timer No. selection page

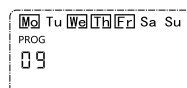
- [Page A] Tap **SET** to enter
- Tap **▼** / **▲** adjust the serial number, Not displaying (ON/OFF) indicates that the sequence number is timed No data set for device
- Long press **▼** to delete the timer data
- Tap **SET** to adjust the timer data

[C/D/E/F/G Page] You can long press SET to save data and return to [A Page]



E-Time period setting page

- [D Page] Tap **SET** to enter
- Tap **SET** to select the adjustment position
- Tap **▼** / **▲** Adjust Values



F-Weekday selection page

- [E Page] Tap SET to enter
- Tap **▼** to select the adjustment position
- Tap **▲** to adjust values (framed as weekdays)



G-Concentration ratio setting page

- [F Page] Tap **SET** to enter
- Tap **▼** / **▲** Adjust Values
- Tap **SET** to switch between "WORK" and "PAUSE" Or return to page D

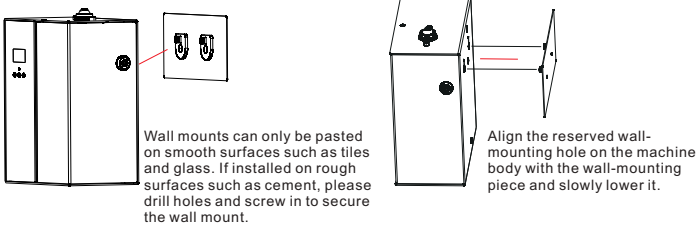


H-APP Connected
-Locked screen page

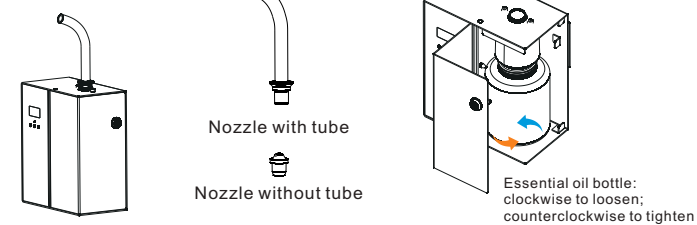
- Locked or connected by mobile appBluetooth/WIFI automatic entry
- **OFF** Flashing indicates that the screen has been locked by the APP
- **OFF** Display indicates that the device is inWithin the non working timer

INSTALLATION DIAGRAM

A.Wall Mount

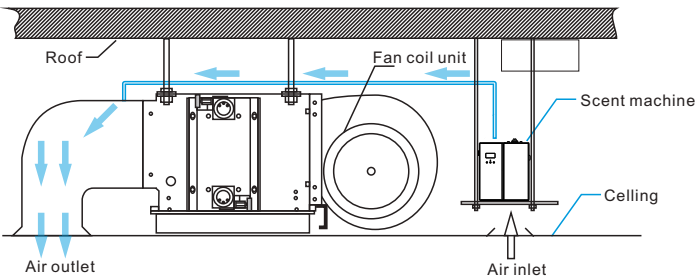


B.Stand alone

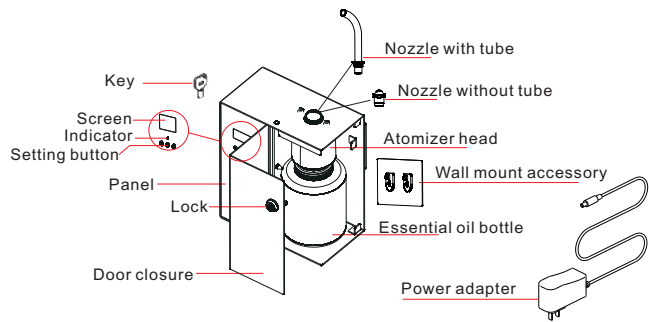


PRODUCT INSTALLATION

C.Connect to fan coil unit installation



PRODUCT OVERVIEW



WARRANTY CARD

1. Any belongs to under normal usage circumstance cause because of the product's own quality,customers can bring the card and the machine get the free repair from our company.
2. In normal use conditions,for the causes of manufacturer's fault, we will offer warranty. There is one year warranty since purchase date.
3. The following are no warranty services:
 - The damage caused by natural disaster and accident (For example:Conflagration, Earthquake and so on);
 - Don't according to the operational requirement to use;
 - The damage caused by transport improper;
 - Can't provide the warranty card or certificate of content be altered.
4. If maintenance,the guarantee of quality assurance and obligations, the time limit according to the warranty card.

APP DOWNLOAD QR CODE AND OPERATION



APP download QR code



APP operation guide

WARRANTY CARD

● Maintenance records

Maintenance Date	Maintenance Organisation	Maintenance item	Serviceman

Since the date of sale, the product will be free of charge for one year, beyond the scope of warranty, paid maintenance, and lifetime maintenance.

CERTIFICATION

Product Name: Aroma Diffuser
Model: E500
Grade: First Class
Place of Origin: Guangzhou, China
Inspectors: _____
Production Date: _____