

Ceiling Aroma Diffuser D300

PRODUCT MANUAL

ACCESSORIES: Product manual, Warranty card, Certification.

Before using product, please read this instructions carefully and safe-keeping.

Notes:

- Do not disassemble the device by yourself;
- It is strictly forbidden to tilt or invert the equipment that is working and contains essential oils;
- Do not use other non-standard power supplies. The device only supports DC 12V adapters, otherwise the device will be damaged.
- Do not use this equipment in extreme environments such as high temperature, excessive humidity, and excessive humidity;
- Do not install/place the device in an area where children can easily reach;
- Do not place the device in an area with poor signal to prevent the device from being connected due to problems.
- When connecting to WIFI, please pay attention to adjust the connection mode as needed. Older routers may need AP mode (compatible mode) to connect;
- The Bluetooth connection is recommended to be within five meters to ensure stable data transmission;
- Do not add essential oil from the fogging place, otherwise the machine will not be atomized normally, and the serious situation will cause damage to the machine;
- When replacing essential oils, please pay attention to whether the gasket at the bottle mouth installation is off or damaged. If it is off or damaged, it should be replaced in time;
- If the machine is not used for a long time, remove the essential oil and unplug the power supply;
- Since the device itself has a certain weight, please do not install the device in an unstable place to prevent the device from falling.
- When you need to rotate the device to adjust the air outlet angle, you should first unplug the power connector on the main body of the device, and hold the main body of the device before rotating it.

COMMON TROUBLESHOOTING

Malfunction	Exclude
No atomization	Whether the power supply is connected, air pump is damaged, and the equipment is in working.
Small amount of atomization	Whether the atomization core is blocked or not, and the cleaning equipment confirms; whether the air pump is aging.
Fragrance spray spouting liquid	Whether the equipment is tilted, and essential oil in the bottle overflows the atomizing core.
Essential oil leak	Whether the essential oil bottle is loose, gasket at the mouth of the bottle is damaged, and atomizing head is damaged.
The device emits abnormal noise	Whether the air pump is damaged, check whether there is air outlet or abnormal vibration.
Can't connect to device	Whether the device is connected (red light is on) WIFI connected equipment: Whether the router is compatible with the general mode, please use the AP mode (compatible mode) if the router is not compatible; whether the distance between the router and the device is too far; Bluetooth connected device: Whether the mobile phone is too far away from the device;

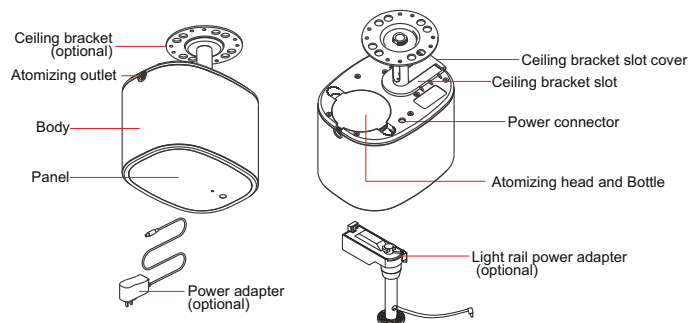
PRODUCT PARAMETERS

Size	126.9mm×161.3mm×121.5mm	Installation size	126.9mm×161.3mm×194.9mm
Rated voltage	12V1A	Weight	1.2kg
Power	6W	Coverage	300m³
Atomization	0.15-1.50g/h	Essential oil capacity	160ml

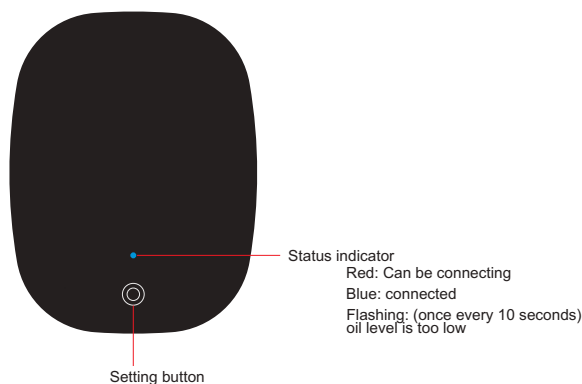
CONCENTRATION AND CONSUMPTION

Working time(S)	Interval(S)	Atomization amount(g/h)	Working time(S)	Interval(S)	Atomization amount(g/h)
10	100	0.15	60	50	0.90
20	90	0.30	70	40	1.05
30	80	0.45	80	30	1.20
40	70	0.60	90	20	1.35
50	60	0.75	100	10	1.50

PRODUCT OVERVIEW



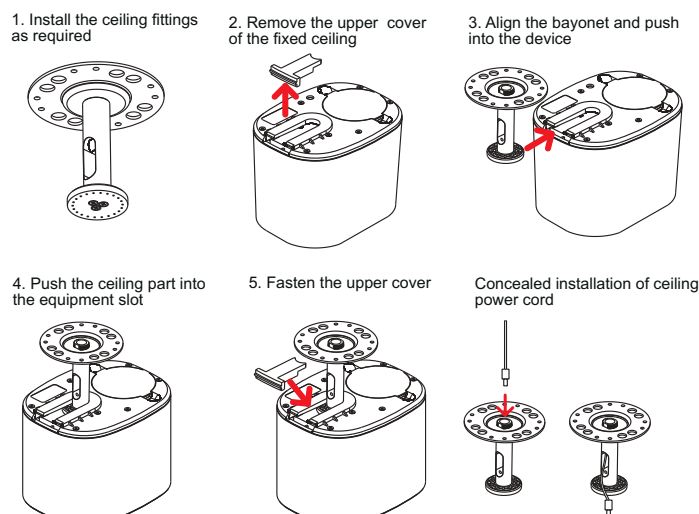
PANEL AND OPERATION INSTRUCTIONS



- (The indicator light will automatically go out after 30 seconds of inactivity, Press the setting button to light.)
- When the light is always on, press and hold the setting button for 3 seconds until the red light flashes and release the button to complete the IOT module reset;
- When the light is always on, long press the setting button for 3 seconds, the red light flashes, do not release it and then long press for 3 seconds until the blue light flashes and release the button to complete the factory reset.

PRODUCT INSTALLATION

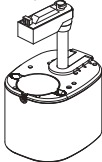
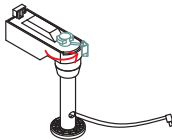
Ceiling installation



PRODUCT INSTALLATION

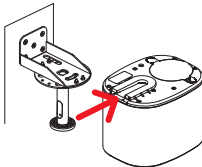
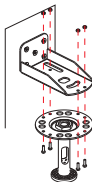
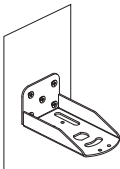
Installation of connecting ceiling light rail

- 1.Put the light rail power adapter into the light rail, rotate the clip (Green part) 90 degrees in the direction of the arrow, and fix it in the light slot.
2. Clamp the light rail into the connecting groove of the equipment and buckle the upper end cover to complete.

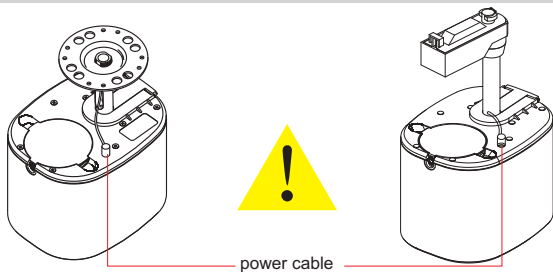


Wall mount installation

1. First fix the wall mount part to the wall
2. Fix the ceiling part on the wall-mounted part with screws
3. Align the bayonet and push into the device



INSTALLATION PRECAUTIONS



In the case of ceiling-mounted power cord concealed installation and light rail installation, the power cord should be unplugged to rotate the device.

APP DOWNLOAD QR CODE AND OPERATION



APP download QR code



APP operation guide

WARRANTY CARD

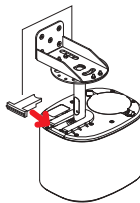
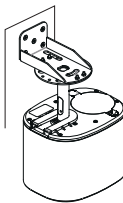
● Maintenance records

Maintenance Date	Maintenance Organisation	Maintenance item	Serviceman

Since the date of sale, the product will be free of charge for one year, beyond the scope of warranty, paid maintenance, and lifetime maintenance.

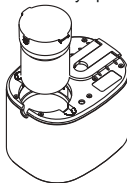
PRODUCT INSTALLATION

4. Push the ceiling part into the equipment.
- 5.Fasten the upper cover



Replace essential oils

1. Take out the essential oil bottle assembly upwards
2. Rotate the essential oil bottle to the left
3. Separate the essential oil bottle and add essential oil, then reinstall it



WARRANTY CARD

1. Any belongs to under normal usage circumstance cause because of the product's own quality,customers can bring the card and the machine get the free repair from our company.
2. In normal use conditions,for the causes of manufacturer's fault, we will offer warranty. There is one year warranty since purchase date.
3. The following are no warranty services:
 - The damage caused by natural disaster and accident(For example:Conflagration, Earthquake and so on);
 - Don't according to the operational requirement to use;
 - The damage caused by transport improper;
 - Can't provide the warranty card or certificate of content be altered.
4. If maintenance,the guarantee of quality assurance and obligations, the time limit according to the warranty card.

CERTIFICATION

Product Name: Aroma Diffuser
Model: D300
Grade: First Class
Place of Origin: Guangzhou, China
Inspectors: _____
Production Date: _____