

AROMA DIFFUSER C200

PRODUCT MANUAL

ACCESSORIES:
Product Manual
Certification

Before using product, please read this instructions carefully and safe-keeping.

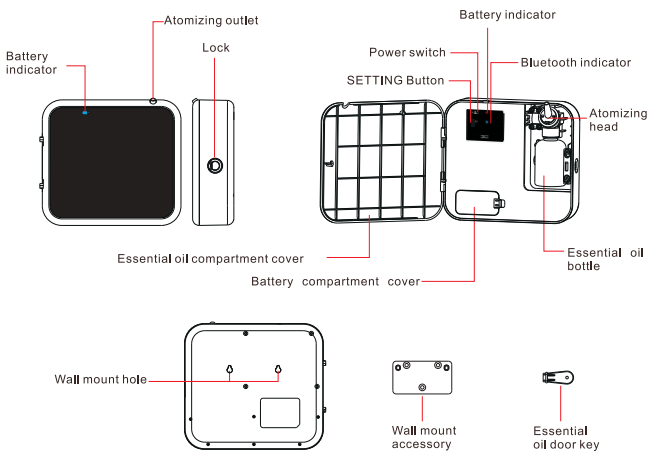
Notes:

1. Please avoid the equipment from touching extreme environments such as water, fire, moisture, etc.
2. Please avoid the device falling or hitting with external force
3. Do not open the device by yourself!
4. Do not invert or tilt the device after it is loaded with essential oil to prevent the essential oil from leaking out.
5. The device only supports USB5V (Note: USB5V power needs to be purchased separately, if necessary, please contact the dealer) or Three D size batteries, using a non-standard power supply will invert the device damage
6. This product is not toys, please do not let children touch
7. If you do not use this product for an extended period of time, unplug it or remove the battery.

Common troubleshooting

Malfunction	Exclude
No atomization	Whether the power turn on or not, the battery has power or not, and the air pump is damaged or not.
Small amount of atomization	Whether the atomization core is blocked or not, and the cleaning equipment confirms: whether the air pump is aging.
Fragrance spray spouting liquid	Whether the device is inclined or not, and the atomization head is damaged.
Essential oil leak	Check the essential oil bottle loose or not.
The device emits abnormal noise	Check the air pump loose or not

Product Overview



Product parameters

Power	2W	Panel color	Black, white, customized
Weight	1.15 kg	Coverage	200 cubic meter
Noise	<50 db	Size	W215mm×D63mm×H191mm
Rated voltage	DC4V~5V	Power supply	USB DC5V or 3*D size battery
Essential oil capacity	100ml	Essential oil type	pure essential oil (Recommended viscosity <18mpa.s)

Battery consumption schedule

Working hour (10 Hours/Day)			
Grade	Lifetime (Days)	Grade	Lifetime (Days)
20	10	10	110
18	18	8	141
16	27	6	172
14	47	4	203
12	78	2	251

Note:

1. It is recommended to use alkaline Nanfu No. 1 D size battery (please use qualified battery with reliable quality and stable capacity).
2. Different use environments and flavors will have some impact on battery life. The data is for reference only.

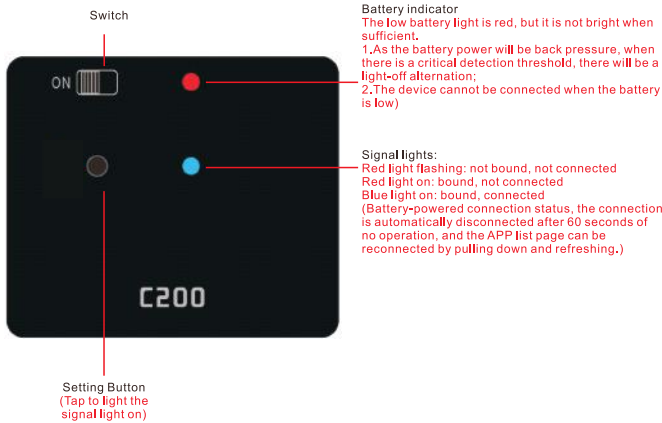
Concentration and Consumption

Grade	Interval (sec)	Grade	Interval (sec)
1	255	11	90
2	240	12	75
3	210	13	60
4	195	14	45
5	180	15	30
6	165	16	25
7	150	17	20
8	135	18	15
9	120	19	10
10	105	20	5

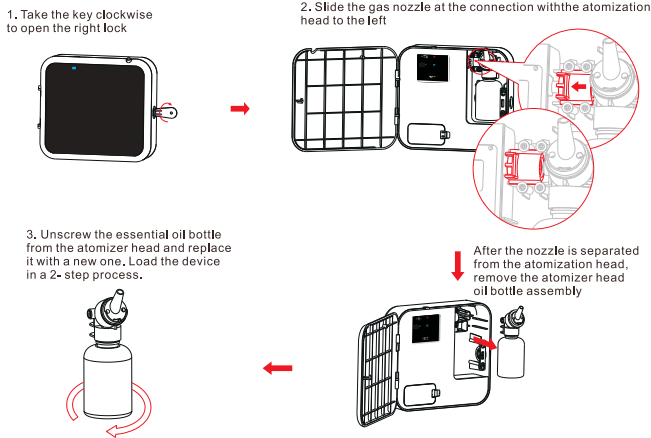
Note:

1. The atomization duration is 4 seconds.
2. 100ml essential oil can be atomized about 50,000 times, different flavors will be different.

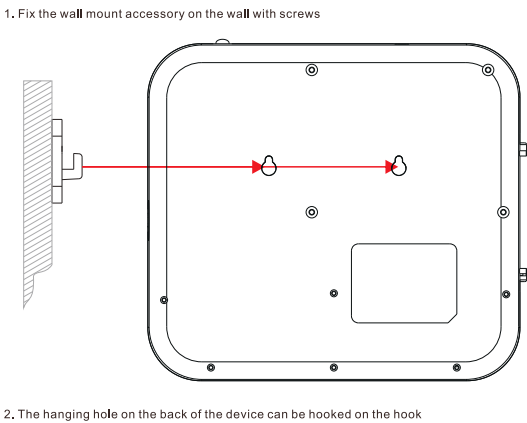
Control panel



Replace oil bottle



Wall mount installation



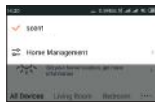
Phone binding

1. Scan the QR code below and follow the prompts to download and install the APP (or Apple APP store, Android Google Play search for "Smart Scent" to download.)



Choose this App to download

2. Open the App, after completing the registration, follow the prompts to create a family. (If you need to add multiple families: select "Family Name"-->"Manage Family"-->"Add Family" in the upper left corner of the main interface in turn)



3. After the addition is complete, click the "+" in the upper right corner or "Add Device" in the interface to start adding devices; (multiple families need to click the family name in the upper left corner, select the placed family and add it)

Note: When adding a device, you must grant (WIFI/Bluetooth/Data/Positioning) permission according to the prompt and turn on related functions (adding a wifi device requires entering the wifi and password according to the prompt)

A device can only exist in one room of a family.



Family group management page



Click "+" to add device



Choose Add Manually

Add manually

When the automatic addition fails, select "Manually add" on the add interface, select the desired device type, click the "Confirm" indicator flashes quickly, allowing Bluetooth and positioning to be turned on, and click "Add" after the device appears.

Working time period and grade setting, system time setting

It is recommended to set the time period after the calibration time. The first time period is the factory default setting. You can set the time period (up to 5) as needed. When the gears in the repeated time period are different, the previous time period shall prevail.)



Equipment details

Working time period (click to modify)

Click "+" to add (up to 5)

Calibration equipment real-time running clock

Time period master switch

Unbind

1.Restart the power supply of the device, long press the "Set button" to "DI" sound (red light flashes) to complete the unbinding;
2.APP device operation page-device details-remove the device and complete the unbinding.

Reset factory setting

(Red light flashes) Long press the "Setting Button" to "Di" sound (blue light flashes for 3 seconds), recovery is complete.

WARRANTY CARD

Dear customer,

Hello! Thank you for choosing our products. We not only provides high-quality products, but also provides high-quality after-sales service. When you need service, please show this card to our Customer Support Services department, you will get the standard, high-quality, efficient service. This warranty card is to get a warranty certificate, please be sure safekeeping. Thanks again for the trust and support that you give ours products.

- 1.This warranty is applicable for the entirely new ours products that are for personal use and which are sold by the distributors or agencies in the mainland, but not applicable for the entirely new products with resale.
- 2.All machines are provided one year warranty since the purchase date. During the warranty period if the machine failure will provide free warranty. The warranty does not cover consumables(perfume, essential oils).
- 3.If want to obtain warranty service, please contact the service department of customer support in ours during the warranty period and show a valid warranty card and an original or photocopy of formal commercial invoice to the after-sales service department.
- 4.Warranty service cannot be included in these conditions under below :
 - ① Damages and problems caused by disasters and accidents(such as fire, earthquake, breaking and so on).
 - ② Don't operate as the requirements and some problems are caused in unsuitable working environments and conditions.
 - ③ Product was repaired by people who were authorized by non-ours before or problems that are caused by replacing additional components .
 - ④ Damages are caused by improper transport after delivery.
 - ⑤ Unable to provide valid warranty card, warranty card does not match with product or has been altered.
 - ⑥ Daily maintenance and cleaning.
 - ⑦ Product is operated with an overburden.
 - ⑧ Products, consumer goods, parts, components, materials or interfaces that are not produced or provided .
 - ⑨ Products that are sold in abnormal ways.
- 5.After maintenance service, We has rights to keep the old spare parts.
- 6.Please inform the receiver when the machine is needed to sent to the maintaining service center, You will be responsible for the relevant fees incurred during the delivery process.
- 7.Except the product quality assurance and warranty obligation that relevant law and the warranty card prescribe, We isn't responsible for any quality assurance and warranty obligation for any other products. For the quality assurance and warranty obligation of any product that ourscm mits, the deadline is based on the warranty period that the warranty card regulates.
- 8.The warranty card is the only valid certificate that you can get warranty service.

● Maintenance records

Maintenance Date	Maintenance Organisation	Maintenance item	Serviceman

Since the date of sale, the product will be warranty for one year, beyond the scope of warranty, paid maintenance and lifetime maintenance.

CERTIFICATION

Product Name: Aroma Diffuser

Model: C200

Grade: First Class

Place of Origin: Guangzhou, China

Inspectors: _____

Production Date: _____