

AROMA DIFFUSER C100

PRODUCT MANUAL

ACCESSORIES:
Product manual
Warranty card
Certification

Product parameters

Power	2W	Panel color	Black, White
Weight	0.6kg	Coverage	100-150 cubic meter
Noise	<36db	Size	W150mm×D60mm×H150mm
Rated voltage	DC4V-5V	Power supply	USB DC5V or 3 AA batteries
Essential oil capacity	100ml	Essential oil type	Essential Oils (Recommended viscosity<18mpa.s)

Concentration and Consumption

Grade	1	2	3	4	5	6	7	8	9	10
Interval (min)	15.5	14.5	13.5	12.5	11.5	10.5	9.5	8.5	7.5	6.5
Grade	11	12	13	14	15	16	17	18	19	20
Interval (min)	5.5	4.5	3.5	2.5	1.5	1.3	1.1	0.9	0.7	0.5

Note:

- When no external USB 5V power supply, the maximum can only be adjusted to 15 grades;
- The atomization duration is 3 seconds;
- 100ml essential oil can be atomized about 20,000 times, different flavors will be different (C100 atomization and diffusion incense ventilation system optimization and upgrading, high utilization of essential oils, no other similar product liquid spray phenomenon).

Before using product, please read this instructions carefully and safe-keeping.

Notes:

- Please avoid the equipment from touching extreme environments such as water, fire, moisture, etc.
- Please avoid the device falling or hitting with external force
- Do not open the device by yourself
- Do not invert or tilt the device after it is loaded with essential oil to prevent the essential oil from leaking out.
- The device only supports USB5V (Note: USB5V power needs to be purchased separately, if necessary, please contact the dealer) or three 1.5V AA batteries, using a non-standard power supply will invert the device damage
- This product is not toys, please do not let children touch
- If you do not use this product for an extended period of time, unplug it or remove the battery.

Common troubleshooting

Malfunction	Exclude
No atomization	Check the power is on or off, and the air pump is damaged or not.
Small amount of atomization	Whether the atomization core is blocked or not, and the cleaning equipment confirms; whether the air pump is aging.
Fragrance spray spouting liquid	Whether the device is inclined or not, and the atomization head is damaged.
Essential oil leak	Check the essential oil bottle loose or not.
The device emits abnormal noise	Check the air pump loose or not

Battery consumption schedule

Working hour(10 Hours/Day)		Working hour(15 Hours/Day)	
Grade	Lifetime(Days)	Grade	Lifetime(Days)
15	15	15	10
14	25	14	16
13	35	13	23
12	45	12	30

Note:

- The test battery adopts Nanfu and Xiaomi AA batteries (please use qualified batteries with stable capacity);
- Different use environments and flavors will have some impact on battery life. The data is for reference only.

Battery testing

Light up the screen

Long press **UP** button to display power information (7 grid power)

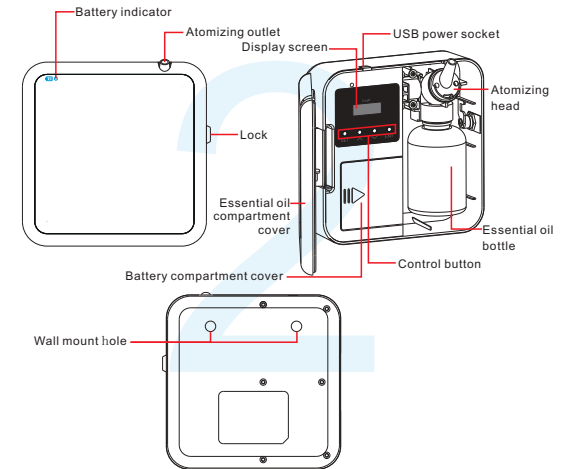
Press **ENT** to exit



Low battery display
Power detection is 0 grid, the red light is in the upper left corner

Note: As the battery power will be back pressure, when there is a critical detection threshold, there will be a light-off alternation

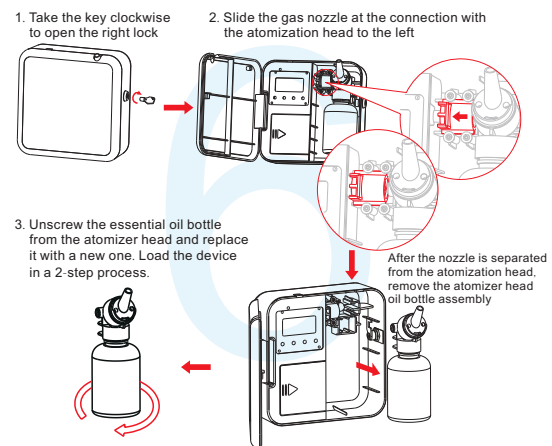
Product Overview



Basic operation brief

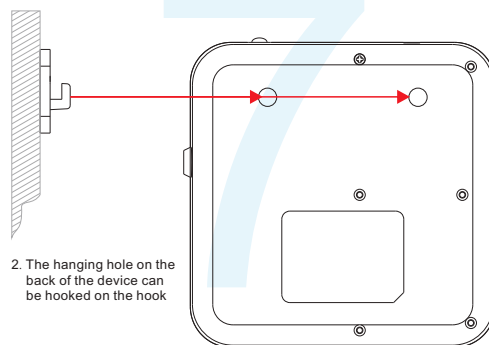
Light up the screen	When Power on, machine will be in the ON mode. When the screen is blanked out, touch SET once
Time setting	In bright screen mode, long press SET (about 3 seconds) to enter the setting mode, DOWN selects required setting items, press UP button to adjust parameters
Working hours setting(Week day & Time&Grade)	In bright screen mode, touch the SET button once to enter the setting mode, there are 5 working segments, each segment can be set separately: Working period, workday selection and grade selection (note: when multiple segment time overlap, the grade position is based on minimum the set value of the segment number.)
Restore factory setting	In the bright screen state, long press the ENT (about 3 seconds) to complete the time recovery (the grade is 10, work all week day, work from 7:00 to 21:00 every day)
Off screen status	When in the ON mode, Press the ENT to return to the initial light screen mode, the device will automatically shut out the screen after 5 seconds
Enter the OFF mode(OFF mode means stop Machine mode, the device is not atomized)	In the bright mode of the ON mode, long press the DOWN button for 3 seconds, and the screen is displayed OFF .
Restore ON mode (ON mode means the device is working)	In the power-on state and in the OFF mode, long press UP button for 3 seconds, Restore ON mode and bright screen status up

Replace oil bottle



Wall mount installation

1. Fix the wall mount with screws or 3M double-sided tape on the wall



WARRANTY CARD

1. Any belongs to under normal usage circumstance cause because of the product's own quality, customers can bring the card and the machine get the free repair from our company.
2. In normal use conditions, for the causes of manufacturer's fault, we will offer warranty. There is one year warranty since purchase date.
3. The following are no warranty services:
 - ❑ • The damage caused by natural disaster and accident (For example: Conflagration, Earthquake and so on);
 - ❑ • Don't according to the operational requirement to use;
 - ❑ • The damage caused by transport improper;
 - ❑ • Can't provide the warranty card or certificate of content be altered.
4. If maintenance, the guarantee of quality assurance and obligations, the time limit according to the warranty card.

● Maintenance records

Maintenance Date	Maintenance Organisation	Maintenance item	Serviceman

Our company provide one year free repair free repair after the equipment has been sold, beyond one year we offer paid repair and lifelong maintenance.

CERTIFICATION

Product Name: Aroma Diffuser
 Model: C100
 Grade: First Class
 Place of Origin: _____
 Inspectors: _____
 Production Date: _____